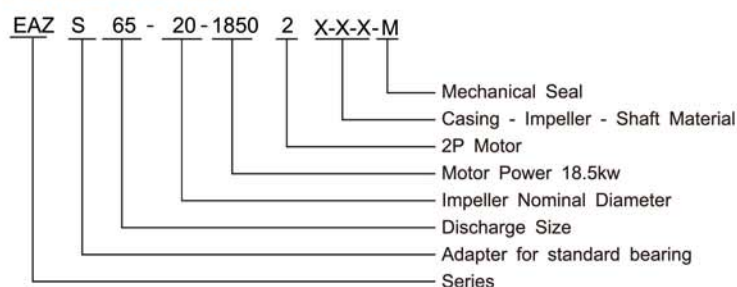




## Description & Features

EIFEL EAZS series are Close-coupled type of EA series. No need to use couplings and motor shaft is plugged into pump shaft to ensure concentricity and shorten the axial length. Highly interchangeable parts, space saving, various applications in plants, mines, city water supplies, fire-fighting systems, air-condition systems and irrigation.

## Model Instruction



## Material Code

C: Cast Iron 45: ASTM 1045  
Q: Ductile Iron S304: ASTM 304  
B: Brass S316: ASTM 316  
S: ASTM 420 M: Mechanical Seal

## Design & Structure

Design	Performance and dimensions referring to the European standard BS EN733/DIN24255
Structure	Close-coupled, Axial End-Suction, Single-Stage, Single-Suction, Volute Casing
DN (mm)	32~150
Flange	DIN2501 PN16 GB / T17241.6 PN1.6
Motor	IEC standard motor

## Applications

- Water supply and drainage
- HVAC and Cooling Tower
- Marine – Ballasting & Bilge
- Booster and Pressurization Set
- Irrigation and agriculture
- Water supply and drainage
- Food and chemical industry (with stainless steel material)

## Material

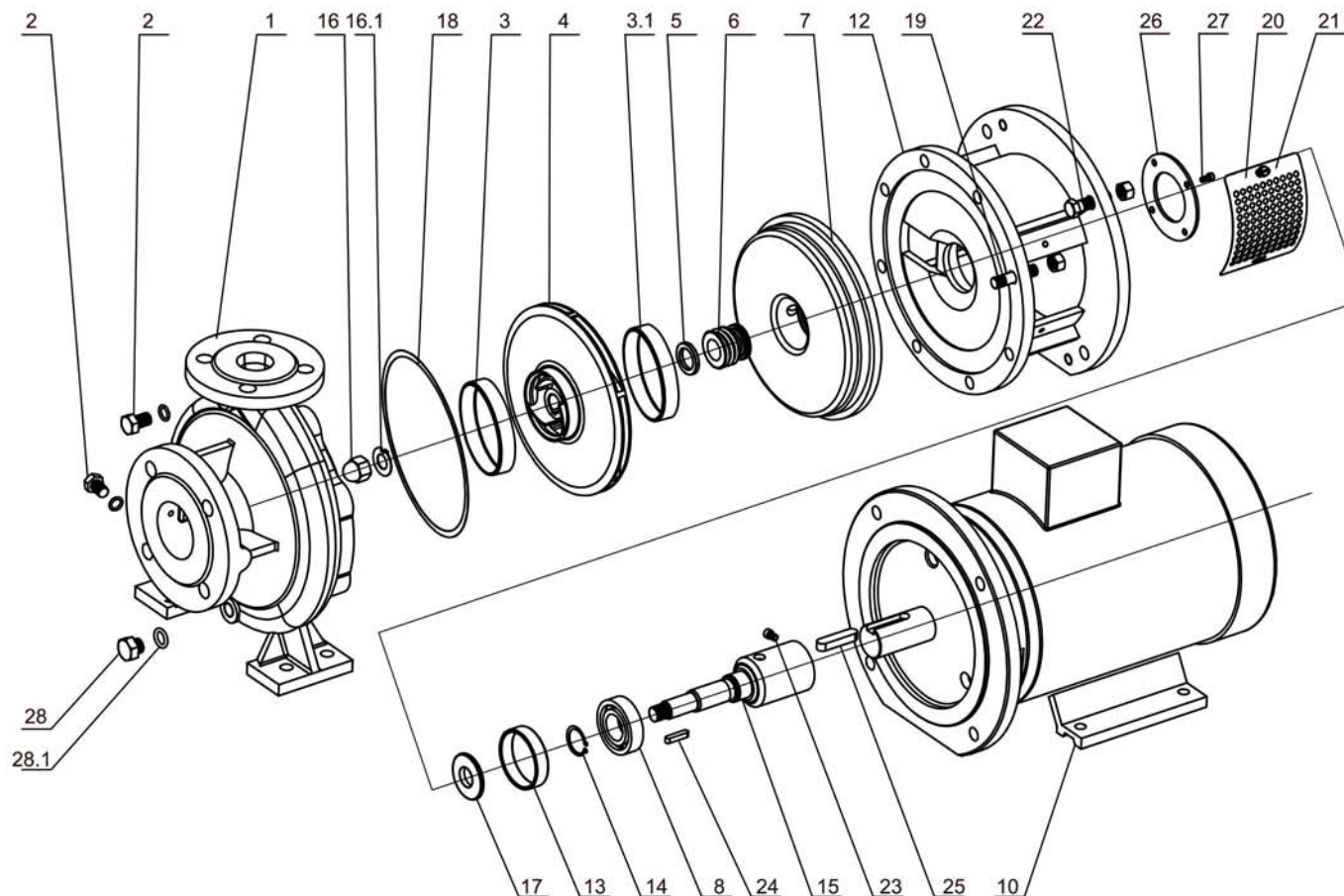
Part	Standard Material	Options on request
Casing	Cast Iron	Ductile Iron / ASTM304 / ASTM316
Impeller	Brass	Cast Iron / ASTM304 / ASTM316
Shaft	ASTM420	ASTM304 / ASTM316 / ASTM1045
Shaft Seal	Mechanical Seal	-

## Operating Data

Flow Rate(Q)	4~500m <sup>3</sup> /h
Head(H)	8~150m
Speed	1450 or 2900 rpm (50Hz) / 1750 or 3500 rpm (60Hz)
Max. Temperature	85°C(standard)
Working Pressure	1.0 MPa standard; 1.6 MPa on request
Conveying Medium	Clean water or liquids similar to clean water in physical property



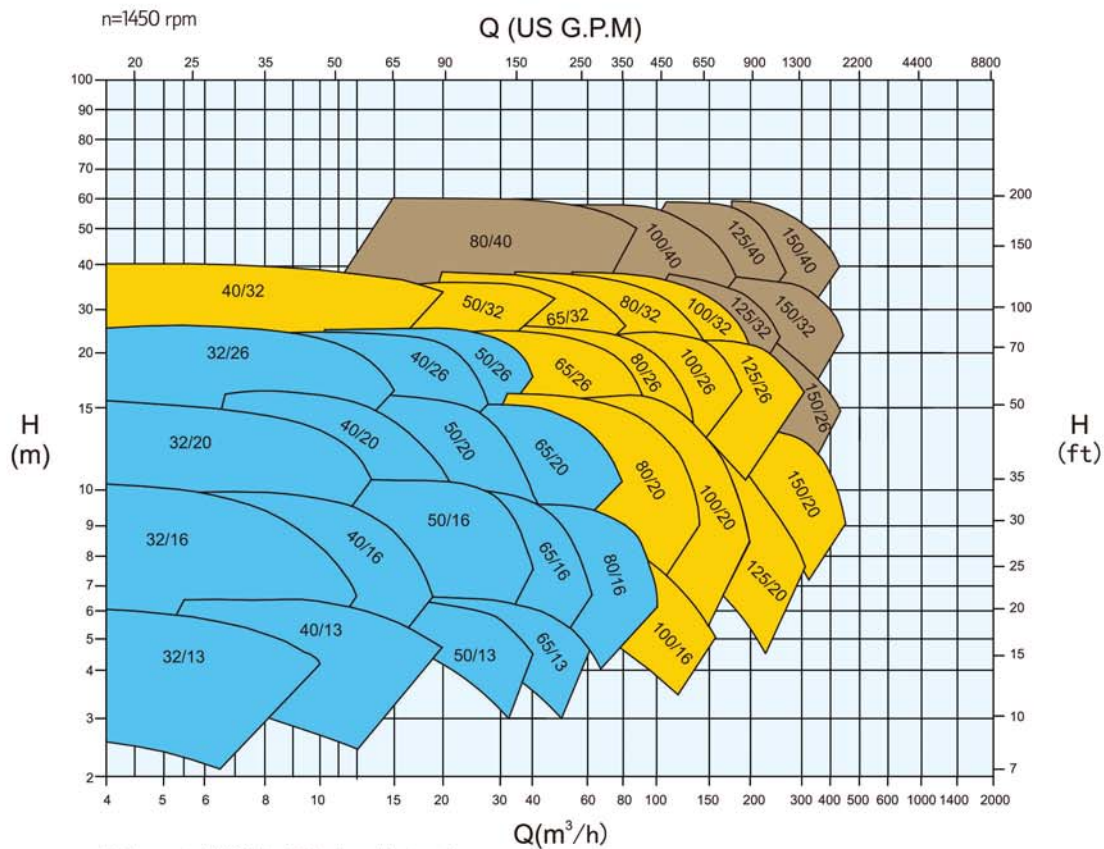
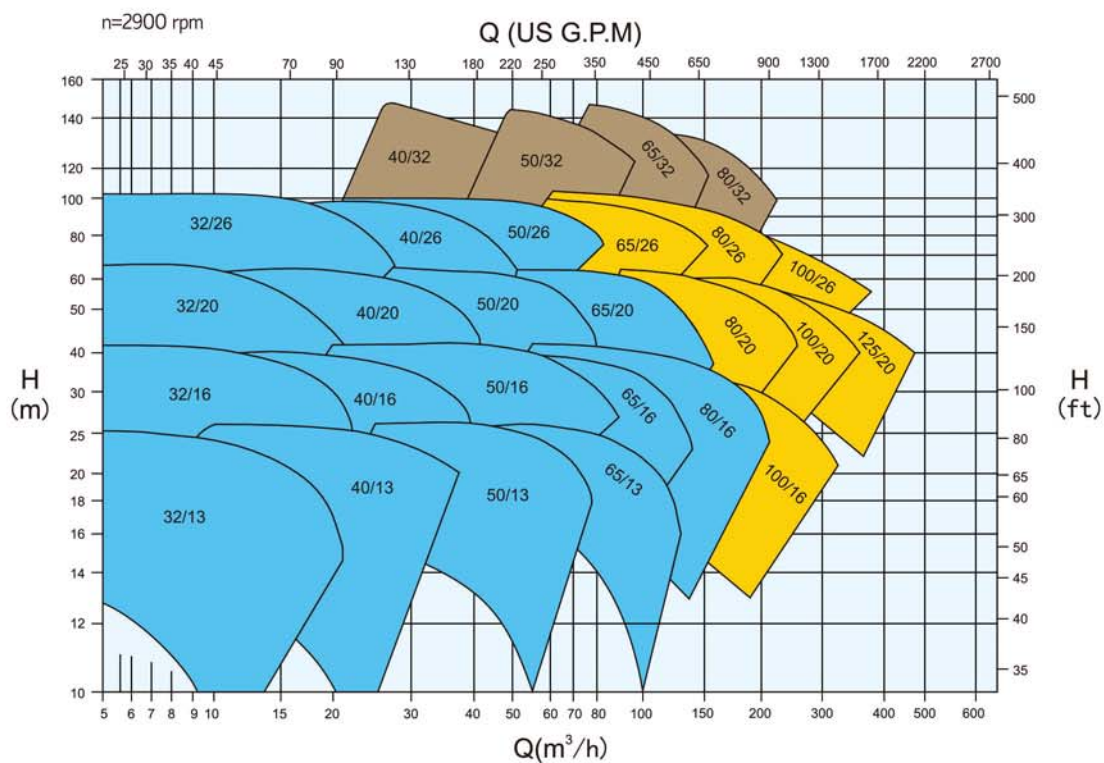
## EAZS Series Explode View & List of Parts



Code	Part Name	Code	Part Name
1	Casing	16	Impeller Nut
2	Plug & Washer	16.1	Lock Washer
3	Wear Ring (Front)	17	Rubber Slinger
3.1	Wear Ring (Back)	18	Casing Gasket
4	Impeller	19	Screw Bolt
5	Seal Seat	20	Guard
6	Mech. Seal	21	Screw
7	Casing Cover	22	Screw Bolt & Nut
8	Bearing	23	Screw
10	B35 Motor	24	Key
12	Adapter	25	Key
13	Rubber Check	26	Bearing Cover
14	External Circlips	27	Screw
15	Shaft	28	Plug & Washer



## EAZS Series-50Hz Performance

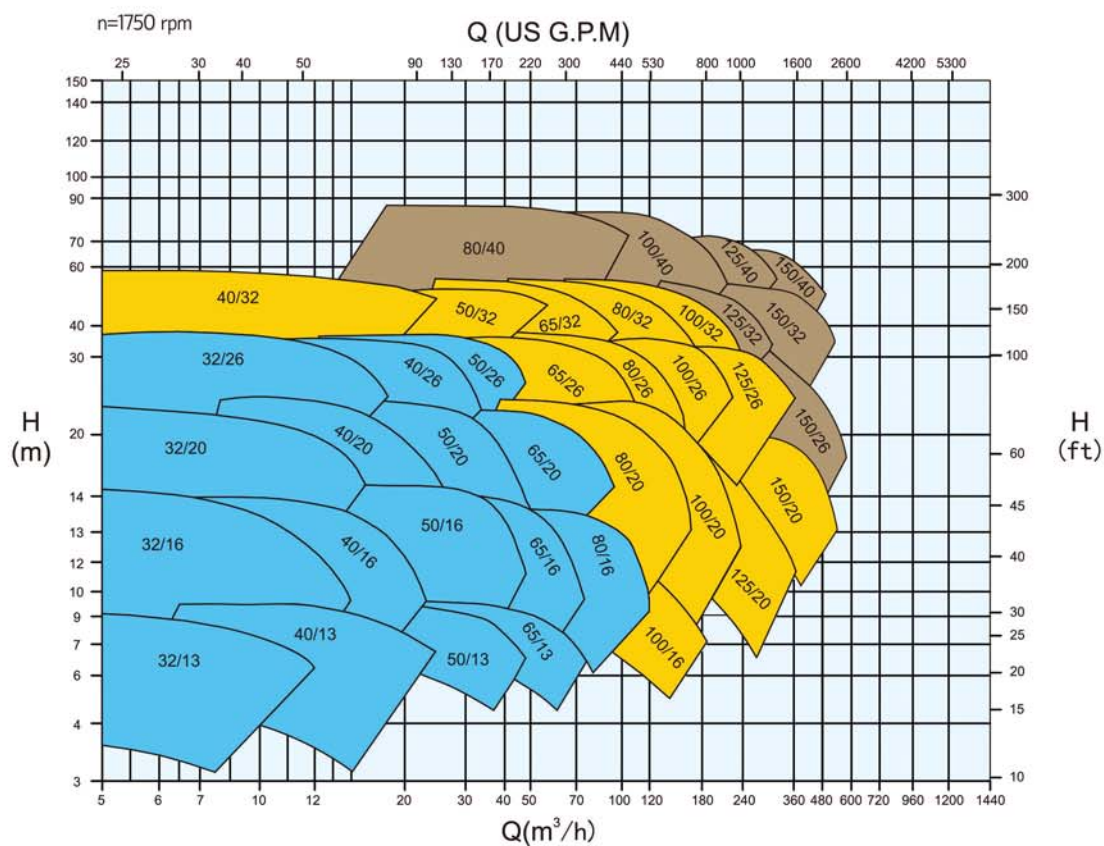
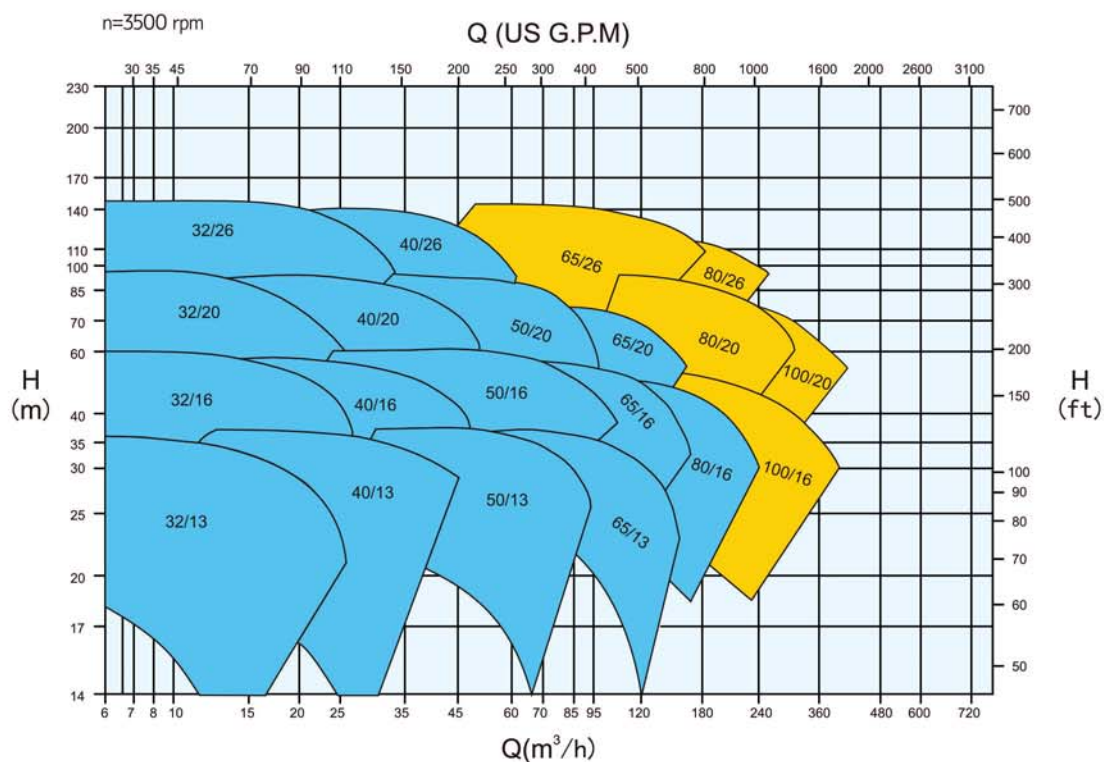


Performance to ISO9906 Grade 2 for clean cold water only





## EAZS Series-60Hz Performance





EAZS		Motor(B35)		Flange		Installation Dimensions(mm)																Weight(kg)		
Model	Model	kw	DN1	DN2	a	h1	h2	L1	L2	L	A	B	H	HD	m1	m2	n1	n2	S1	S2	Pump	Motor	Total	
EAZS32/13-00554	Y2-801-4	0.55	50	32	80	112	140	152	167	407	125	100	80	220	100	70	190	140	10	10	27	16	43	
EAZS32/13-01102	Y2-802-2	1.1							27	17	44													
EAZS32/13-01502	Y2-90S-2	1.5							27	21	48													
EAZS32/13-02202	Y2-90L-2	2.2							27	26	52													
EAZS40/13-00554	Y2-801-4	0.55	65	40	80	112	140	152	167	407	125	100	80	220	100	70	210	160	12	12	29	16	45	
EAZS40/13-01502	Y2-90S-2	1.5							30	21	51													
EAZS40/13-02202	Y2-90L-2	2.2							30	26	55													
EAZS40/13-03002	Y2-100L-2	3							32	44	76													
EAZS40/13-04002	Y2-112M-2	4	65	50	100	132	160	164	192	489	160	140	100	270	125	95	240	190	14	14	32	43	75	
EAZS50/13-00554	Y2-801-4	0.55						199	504	190	112		300	30							16	46		
EAZS50/13-00754	Y2-802-4	0.75						152	173	422	140	90	250	31							17	47		
EAZS50/13-01104	Y2-90S-4	1.1						152	173	422	140	90	250	31							22	54		
EAZS50/13-03002	Y2-100L-2	3	65	50	100	132	160	164	192	489	160	140	100	270	125	95	280	212	15	15	39	44	83	
EAZS50/13-04002	Y2-112M-2	4						199	504	190	112		300	39							43	82		
EAZS50/13-05502	Y2-132S1-2	5.5						187	241	577	216	132	345	40							65	105		
EAZS50/13-07502	Y2-132S2-2	7.5						40	69	109														
EAZS65/13-00754	Y2-802-4	0.75	80	65	100	160	180	152	154.5	407	125	100	80	220	125	95	280	212	10	10	36	17	53	
EAZS65/13-01104	Y2-90S-4	1.1						160.5	422	140	90		250	37							22	60		
EAZS65/13-01504	Y2-90L-4	1.5						187	228.5	577	216	140	132	345							37	27	64	
EAZS65/13-05502	Y2-132S1-2	5.5						219	279.5	724	254	210	160	420							46	65	111	
EAZS65/13-07502	Y2-132S2-2	7.5	80	40	80	132	160	152	167	407	125	100	80	220	100	70	240	190	14	14	46	69	115	
EAZS65/13-11002	Y2-160M1-2	11						187	241	577	216		132	345							54	108	162	
EAZS32/16-00554	Y2-801-4	0.55						152	167	407	125	100	80	220							31	16	48	
EAZS32/16-00754	Y2-802-4	0.75						152	173	447	140	125	90	250							31	17	49	
EAZS32/16-02202	Y2-90L-2	2.2	50	32	80	132	160	164	192	489	160	140	100	270	100	70	240	190	14	14	32	26	57	
EAZS32/16-03002	Y2-100L-2	3						199	504	190	140		112	300							33	44	77	
EAZS32/16-04002	Y2-112M-2	4						187	241	577	216	132	345	33							43	76		
EAZS32/16-05502	Y2-132S1-2	5.5						38	65	103														
EAZS40/16-00554	Y2-801-4	0.55	65	40	80	132	160	152	167	407	125	100	80	220	100	70	240	190	14	10	32	16	48	
EAZS40/16-00754	Y2-802-4	0.75						173	422	140	100		90	250							32	17	49	
EAZS40/16-01104	Y2-90S-4	1.1						192	489	160	140	100	270	33							22	56		
EAZS40/16-03002	Y2-100L-2	3						164	192	489	160	140	100	270							35	44	79	
EAZS40/16-04002	Y2-112M-2	4	65	40	80	132	160	164	199	504	190	140	112	300	100	70	240	190	14	12	35	43	78	
EAZS40/16-05502	Y2-132S1-2	5.5						187	241	577	216		140	132							345	39	65	104
EAZS40/16-07502	Y2-132S2-2	7.5						39	69	108														





EAZS			Motor(B35)		Flange		Installation Dimensions(mm)														Weight(kg)													
Model	Model	kw	DN1	DN2	a	h1	h2	L1	L2	L	A	B	H	HD	m1	m2	n1	n2	S1	S2	Pump	Motor	Total											
EAZS50/16-00554	Y2-801-4	0.55	65	50	100	160	180	152	167	407	125	100	80	220	100	70	265	212	14	10	35	16	51											
EAZS50/16-00754	Y2-802-4	0.75							173	422	140	100	90	250							35	17	52											
EAZS50/16-01104	Y2-90S-4	1.1								447	125	36	22	58																				
EAZS50/16-01504	Y2-90L-4	1.5						187	241	577	216	140	132	345							36	27	62											
EAZS50/16-05502	Y2-132S1-2	5.5							219	292	724	254	210	160	420						42	65	107											
EAZS50/16-07502	Y2-132S2-2	7.5								42	69	111																						
EAZS50/16-11002	Y2-160M1-2	11	80	65	100	160	200	152	219	292	724	254	210	160	420	125	95	280	212	14	10	45	108	153										
EAZS50/16-15002	Y2-160M2-2	15							160.5	447	140	100	90	250	45							109	154											
EAZS65/16-00754	Y2-802-4	0.75								164	179.5	489	160	140	100							270	39	17	56									
EAZS65/16-01104	Y2-90S-4	1.1						219	779	254	210	160	250	447	140							125	90	250	40	22	62							
EAZS65/16-01504	Y2-90L-4	1.5														40												27	67					
EAZS65/16-02204	Y2-100L1-4	2.2							80	65	100	160	200	164	179.5	489						160	140	100	270	125	95	280	212	14	12	42	34	75
EAZS65/16-05502	Y2-132S1-2	5.5	219	779	254	210	160	250							447	140	125	90	250	47	65	112												
EAZS65/16-07502	Y2-132S2-2	7.5																		47	69	116												
EAZS65/16-11002	Y2-160M1-2	11	219	779	254	210	160	250						447	140	125	90	250	49	108	157													
EAZS65/16-15002	Y2-160M2-2	15																	49	109	158													
EAZS65/16-18502	Y2-160L-2	18.5		100	80	125	180	225						152	160.5	447	140	125	90	250	125	95	320	250	14	15						49	133	182
EAZS80/16-01504	Y2-90L-4	1.5	219						779	254	210	160	250		447	140	125	90	250	49							27	76						
EAZS80/16-02204	Y2-100L1-4	2.2																		51							34	85						
EAZS80/16-03004	Y2-100L2-4	3	219						779	254	210	160	250	447	140	125	90	250	51	37							88							
EAZS80/16-11002	Y2-160M1-2	11																	58	108	166													
EAZS80/16-15002	Y2-160M2-2	15							219	779	254	210	160	250	447	140	125	90	250	58	109						167							
EAZS80/16-18502	Y2-160L-2	18.5		58	133	191																												
EAZS80/16-22002	Y2-180M-2	22		100	80	125	180	225		219	292.5	809	279	241	180	455	125	95	320	250	14	15	58	155	213									
EAZS80/16-30002	Y2-200L1-2	30	222						307.5		882	318	305	200	505	200							505	505	66	224	290							
EAZS100/16-02204	Y2-100L1-4	2.2																							70	34	104							
EAZS100/16-03004	Y2-100L2-4	3	191						194	516	160	140	100	270	160	120							360	280	18	12	70	37	107					
EAZS100/16-04004	Y2-112M-4	4															71										47	118						
EAZS100/16-15002	Y2-160M2-2	15							246	751	254	210	160	420			806										254	241	160	420	78	109	187	
EAZS100/16-18502	Y2-160L-2	18.5		78	133	211																												
EAZS100/16-22002	Y2-180M-2	22		249	836	279	241	180		455	307	836	279	241	180	455	80	155	235															
EAZS100/16-30002	Y2-200L1-2	30	82						224								306																	
EAZS32/20-00554	Y2-801-4	0.55	50		32	80	160	180	152	167	407	125	100	80	220	100	70	240	190	14	10	38	16	54										
EAZS32/20-00754	Y2-802-4	0.75								173	422	140	100	90	250							38	17	55										
EAZS32/20-01104	Y2-90S-4	1.1									447	125	39	22	62																			
EAZS32/20-01504	Y2-90L-4	1.5		164					199	504	190	140	112	300	167							407	125	100	80	220	100	70	265	212	14	12	39	27
EAZS32/20-04002	Y2-112M-2	4														42																	43	85
EAZS32/20-05502	Y2-132S1-2	5.5							44	65	109																							
EAZS32/20-07502	Y2-132S2-2	7.5	187	241	577	216	140	132	345	44	69	114																						
EAZS32/20-07502	Y2-132S2-2	7.5											44	69	114																			
EAZS32/20-11002	Y2-160M1-2	11		219	292	724	254	210	160	420	49	108	157																					
EAZS40/20-00754	Y2-802-4	0.75		65	40	100	160	180	152	167	407	125	100	80	220	100	70	265	212	14	10	37	17	54										
EAZS40/20-01104	Y2-90S-4	1.1								173	422	140	100	90	250							38	22	61										
EAZS40/20-01504	Y2-90L-4	1.5	447								125	38	27	65																				
EAZS40/20-05502	Y2-132S1-2	5.5	187						241	577	216	140	132	345	43							65	108											
EAZS40/20-07502	Y2-132S2-2	7.5														43								69	112									
EAZS40/20-11002	Y2-160M1-2	11							219	292	724	254	210	160	420	48						108	156											
EAZS50/20-01104	Y2-90S-4	1.1	65	50	100	160	200	155	173	425	140	100	90	250	100	70	265	212	14	10	43	22	65											
EAZS50/20-01504	Y2-90L-4	1.5							167	192	492	160	140	100							270	43	27	70										
EAZS50/20-02204	Y2-100L1-4	2.2																							46	34	79							
EAZS50/20-07502	Y2-132S2-2	7.5						190	241	580	216	140	132	345							48	69	117											
EAZS50/20-11002	Y2-160M1-2	11													53									108	161									
EAZS50/20-15002	Y2-160M2-2	15							222	292	727	254	210	160	420						53	109	162											
EAZS50/20-18502	Y2-160L-2	18.5	222	292	782	254	210		160	420	53	133	185																					
EAZS65/20-02204	Y2-100L1-4	2.2												50	34	83																		
EAZS65/20-03004	Y2-100L2-4	3	164	179.5	489	160	140	100	270	50	37	86																						
EAZS65/20-04004	Y2-112M-4	4											50	47	96																			
EAZS65/20-15002	Y2-160M2-2	15		219	724	254	210	160	420	57	109	166																						
EAZS65/20-18502	Y2-160L-2	18.5											57	133	189																			
EAZS65/20-22002	Y2-180M-2	22			222	809	279	241	180	455	57	155	212																					
EAZS65/20-30002	Y2-200L1-2	30	63	224										288																				
EAZS80/20-03004	Y2-100L2-4	3	180	195.5		505	160	140	100	270	56	37	93																					
EAZS80/20-04004	Y2-112M-4	4												56	47	103																		
EAZS80/20-05504	Y2-132S-4	5.5		203		244.5	593	216	140	132	345	60	65	125																				
EAZS80/20-07504	Y2-132M-4	7.5			60										79	138																		
EAZS80/20-22002	Y2-180M-2	22			235	308.5	825	279	241	180	455	68	155	223																				
EAZS80/20-30002	Y2-200L1-2	30	70	224											294																			
EAZS80/20-37002	Y2-200L2-2	37	238	323.5		898	318	305	200	505	70	235	305																					
EAZS80/20-45002	Y2-225M-2	45												75	286	360																		





EAZS		Motor(B35)		Flange		Installation Dimensions(mm)																Weight(kg)		
Model	Model	kw	DN1	DN2	a	h1	h2	L1	L2	L	A	B	H	HD	m1	m2	n1	n2	S1	S2	Pump	Motor	Total	
EAZS100/20-03004	Y2-100L2-4	3	125	100	125	200	280	180	183	505	160	140	100	270	160	120	360	280	18	12	68	37	105	
EAZS100/20-04004	Y2-112M-4	4						190	520	190	140	112	300	68							47	115		
EAZS100/20-05504	Y2-132S-4	5.5						203	232	593	216	140	132	345							69	65	134	
EAZS100/20-07504	Y2-132M-4	7.5						235	283	633	254	178	132	345							69	79	147	
EAZS100/20-11004	Y2-160M-4	11						238	311	898	318	210	160	420							72	108	180	
EAZS100/20-30002	Y2-200L1-2	30						238	311	898	318	210	160	420							79	224	303	
EAZS100/20-37002	Y2-200L2-2	37	125	100	125	200	280	238	327	943	356	311	225	560	160	120	360	280	18	19	79	235	313	
EAZS100/20-45002	Y2-225M-2	45						272	380	1042	406	349	250	615							83	286	369	
EAZS100/20-55002	Y2-250M-2	55						272	380	1042	406	349	250	615							24	95	373	469
EAZS100/20-75002	Y2-280S-2	75						272	402	1117	457	368	280	680							24	96	485	580
EAZS125/20-07504	Y2-132M-4	7.5						203	232	633	216	178	132	345							12	92	79	171
EAZS125/20-11004	Y2-160M-4	11						235	283	740	254	210	160	420							15	96	108	204
EAZS125/20-45002	Y2-225M-2	45	150	125	140	250	315	238	327	943	356	311	225	560	160	120	400	315	18	24	106	286	392	
EAZS125/20-55002	Y2-250M-2	55						380	1042	406	349	250	615	118							373	491		
EAZS125/20-75002	Y2-280S-2	75						272	402	1117	457	368	280	680							119	485	604	
EAZS125/20-90002	Y2-280M-2	90						272	402	1167	457	419	280	680							122	541	663	
EAZS150/20-11004	Y2-160M-4	11						295	767	822	254	241	160	420							96	108	204	
EAZS150/20-15004	Y2-160L-4	15						308	852	279	241	180	455	96							129	225		
EAZS150/20-18504	Y2-180M-4	18.5	200	150	160	280	400	262	295	822	254	241	180	455	200	150			23	15	98	157	255	
EAZS32/26-02204	Y2-100L1-4	2.2						174	187.5	499	160	140	100	270							55	34	89	
EAZS32/26-03004	Y2-100L2-4	3						229	287.5	734	254	210	160	420							55	37	92	
EAZS32/26-11002	Y2-160M1-2	11						229	287.5	789	254	210	160	420							63	108	171	
EAZS32/26-15002	Y2-160M2-2	15						300.5	819	279	241	180	455	63							109	173		
EAZS32/26-18502	Y2-160L-2	18.5						174	187.5	499	160	140	100	270							63	133	196	
EAZS32/26-22002	Y2-180M-2	22	65	40	100	180	225	229	300.5	819	279	241	180	455	125	95	320	250	14	15	64	155	219	
EAZS40/26-02204	Y2-100L1-4	2.2						174	187.5	499	160	140	100	270							55	34	89	
EAZS40/26-03004	Y2-100L2-4	3						229	287.5	734	254	210	160	420							55	37	92	
EAZS40/26-11002	Y2-160M1-2	11						229	287.5	789	254	210	160	420							63	108	171	
EAZS40/26-15002	Y2-160M2-2	15						300.5	819	279	241	180	455	63							109	172		
EAZS40/26-18502	Y2-160L-2	18.5						175	187.5	500	160	140	100	270							63	133	195	
EAZS40/26-22002	Y2-180M-2	22	65	50	100	180	225	230	300.5	819	279	241	180	455	125	95	320	250	14	15	63	155	218	
EAZS50/26-02204	Y2-100L1-4	2.2						175	187.5	500	160	140	100	270							56	34	90	
EAZS50/26-03004	Y2-100L2-4	3						198	236.5	588	216	140	132	345							56	37	93	
EAZS50/26-04004	Y2-112M-4	4						230	287.5	790	254	254	160	420							56	47	103	
EAZS50/26-05504	Y2-132S-4	5.5						230	287.5	790	254	254	160	420							60	65	125	
EAZS50/26-18502	Y2-160L-2	18.5						230	287.5	790	254	254	160	420							62	133	195	
EAZS50/26-22002	Y2-180M-2	22	65	50	100	180	225	233	315.5	893	318	305	200	505	125	95	320	250	14	19	65	155	220	
EAZS50/26-30002	Y2-200L1-2	30						180	190	520	190	140	112	300							71	224	295	
EAZS50/26-37002	Y2-200L2-2	37						203	232	593	216	140	132	345							71	235	306	
EAZS65/26-04004	Y2-112M-4	4						238	311	898	318	305	200	505							66	47	113	
EAZS65/26-05504	Y2-132S-4	5.5						238	311	898	318	305	200	505							68	65	133	
EAZS65/26-07504	Y2-132M-4	7.5						238	311	898	318	305	200	505							68	79	147	
EAZS65/26-30002	Y2-200L1-2	30	80	65	100	200	250	238	311	898	318	305	200	505	160	120	360	280	18	19	80	224	304	
EAZS65/26-37002	Y2-200L2-2	37						238	327	943	356	311	225	560							80	235	315	
EAZS65/26-45002	Y2-225M-2	45						272	380	1042	406	349	250	615							84	286	370	
EAZS65/26-55002	Y2-250M-2	55						272	380	1042	406	349	250	615							98	373	471	
EAZS65/26-05504	Y2-132S-4	5.5						203	232	593	216	140	132	345							75	65	140	
EAZS80/26-07504	Y2-132M-4	7.5						203	232	633	216	178	132	345							75	79	153	
EAZS80/26-11004	Y2-160M-4	11	100	80	125	200	280	235	283	740	254	210	160	420	160	120	400	315	18	15	81	108	189	
EAZS80/26-37002	Y2-200L2-2	37						238	311	898	318	305	200	505							100	235	335	
EAZS80/26-45002	Y2-225M-2	45						238	327	943	356	311	225	560							102	286	388	
EAZS80/26-55002	Y2-250M-2	55						272	380	1042	406	349	250	615							105	373	478	
EAZS80/26-75002	Y2-280S-2	75						272	402	1117	457	368	280	680							105	485	589	
EAZS100/26-07504	Y2-132M-4	7.5						207	236	637	216	178	132	345							12	85	79	164
EAZS100/26-11004	Y2-160M-4	11	125	100	140	225	280	239	287	744	254	210	160	420	160	120	400	315	18	24	89	108	197	
EAZS100/26-15004	Y2-160L-4	15						239	287	799	254	210	160	420							89	129	217	
EAZS100/26-55002	Y2-250M-2	55						276	384	1046	406	349	250	615							105	373	478	
EAZS100/26-75002	Y2-280S-2	75						276	406	1121	457	368	280	680							112	485	597	
EAZS100/26-90002	Y2-280M-2	90						276	406	1171	457	419	280	680							112	541	653	
EAZS125/26-11004	Y2-160M-4	11						287	744	799	254	210	160	420							104	108	212	
EAZS125/26-15004	Y2-160L-4	15	150	125	250	355	239	287	744	799	254	210	160	420	200	150	450	350	23	15	104	129	233	
EAZS125/26-18504	Y2-180M-4	18.5						300	829	869	279	241	180	455							104	157	261	
EAZS125/26-22004	Y2-180L-4	22						242	315	901	318	305	200	505							104	179	283	
EAZS125/26-30004	Y2-200L-4	30						242	315	901	318	305	200	505							110	240	350	
EAZS150/26-15004	Y2-160L-4	15						248	281	808	254	254	160	420							135	129	264	
EAZS150/26-18504	Y2-180M-4	18.5						248	294	838	279	241	180	455							135	157	292	
EAZS150/26-22004	Y2-180L-4	22	200	150	160	250	355	248	294	878	279	241	180	455	200	150	450	350	23	19	135	179	314	
EAZS150/26-30004	Y2-200L-4	30						306	908	938	318	305	200	505							154	240	394	
EAZS150/26-30004	Y2-200L-4	30						306	908	938	318	305	200	505							154	240	394	





EAZS			Motor(B35)		Flange		Installation Dimensions(mm)																Weight(kg)										
Model	Model	kw	DN1	DN2	a	h1	h2	L1	L2	L	A	B	H	HD	m1	m2	n1	n2	S1	S2	Pump	Motor	Total										
EAZS40/32-03004	Y2-100L2-4	3	65	40	200	250		180	195.5	505	160	140	100	270	125	95	345	280	14	12	75	37	112										
EAZS40/32-04004	Y2-112M-4	4						202.5	520	190	140	112	300	75							47	122											
EAZS40/32-05504	Y2-132S-4	5.5						202	243.5	592	216	140	132	345							79	65	144										
EAZS40/32-07504	Y2-132M-4	7.5																			632	178	79	79	157								
EAZS40/32-22002	Y2-180M-2	22						238	311.5	828	279	241	180	455							15	84	155	239									
EAZS40/32-30002	Y2-200L1-2	30						238	323.5	898	318	305	200	505							88	224	313										
EAZS40/32-37002	Y2-200L2-2	37																			88	235	323										
EAZS40/32-45002	Y2-225M-2	45							339.5	943	356	311	225	560							96	286	381										
EAZS40/32-55002	Y2-250M-2	55						274	394.5	1044	406	349	250	615							24	114	373	487									
EAZS50/32-04004	Y2-112M-4	4						65	50	125		180	202.5	520							190	140	112	300	125	95	345	280	14	12	77	47	124
EAZS50/32-05504	Y2-132S-4	5.5	202	243.5	592	216	178					132	345	81	65	147																	
EAZS50/32-07504	Y2-132M-4	7.5												632	178	81	79	160															
EAZS50/32-11004	Y2-160M-4	11	238	298.5	743	254	210					160	420	15	86	108	194																
EAZS50/32-37002	Y2-200L2-2	37	238	323.5	898	318	305					200	505	91	235	325																	
EAZS50/32-45002	Y2-225M-2	45												98	286	384																	
EAZS50/32-55002	Y2-250M-2	55	274	394.5	1044	406	349					250	615	24	116	373	490																
EAZS50/32-75002	Y2-280S-2	75													117	485	601																
EAZS65/32-05504	Y2-132S-4	5.5	80	65	225	280						201	230	591	216	140	132	345	160	120	400	315	18	12							92	65	157
EAZS65/32-07504	Y2-132M-4	7.5																													631	178	92
EAZS65/32-11004	Y2-160M-4	11						235	283	740	254	210	160	420	95	108	203																
EAZS65/32-15004	Y2-160L-4	15													95	129	224																
EAZS65/32-45002	Y2-225M-2	45						252	341	957	356	311	225	560	19	116	286	401															
EAZS65/32-55002	Y2-250M-2	55						272	380	1042	406	349	250	615	24	122	373	496															
EAZS65/32-75002	Y2-280S-2	75														122	485	607															
EAZS65/32-90002	Y2-280M-2	90						402	1117	1167	457	368	280	680		122	541	663															
EAZS80/32-07504	Y2-132M-4	7.5						100	80	125		201	230	631	216	178	132	345							160	120	400	315	18	12	95	79	174
EAZS80/32-11004	Y2-160M-4	11										235	283	740	254	210	160	420													100	108	208
EAZS80/32-15004	Y2-160L-4	15	100	129	229																												
EAZS80/32-18504	Y2-180M-4	18.5	296	825	279	241	180					455	105	157	262																		
EAZS80/32-75002	Y2-280S-2	75											127	485	612																		
EAZS80/32-90002	Y2-280M-2	90	272	402	1117	1167	457					368	280	680	127	541	668																
EAZS100/32-11004	Y2-160M-4	11	125	100	140		235					283	740	254	210	160	420	160	120	400	315	18	15	105							108	213	
EAZS100/32-15004	Y2-160L-4	15																						105							129	233	
EAZS100/32-18504	Y2-180M-4	18.5					296					825	279	241	180	455	105							157							262		
EAZS100/32-22004	Y2-180L-4	22															105							179							283		
EAZS100/32-30004	Y2-200L-4	30	237	310	897	318	305	200	505	19	111	240	351																				
EAZS125/32-15004	Y2-160L-4	15	150	125	140		249	282	809	254	254	160	420	200	150	500	400						23	15	138	129	266						
EAZS125/32-18504	Y2-180M-4	18.5																							138	157	295						
EAZS125/32-22004	Y2-180L-4	22					307	909	318	305	200	505	138												179	316							
EAZS125/32-30004	Y2-200L-4	30											140												240	379							
EAZS125/32-37004	Y2-225S-4	37					285	359	965	356	286	225	560												19	148	301	449					
EAZS150/32-22004	Y2-180L-4	22					250	295	880	279	279	180	455					15	153	179	332												
EAZS150/32-30004	Y2-200L-4	30																155	240	395													
EAZS150/32-37004	Y2-225S-4	37	200	150	160		286	359	966	356	286	225	560			200	150	550	450	19	163	301	464										
EAZS150/32-45004	Y2-225M-4	45																			163	312	476										
EAZS150/32-55004	Y2-250M-4	55					378	1056	406	349	250	615	178								383	561											
EAZS80/40-15004	Y2-160L-4	15		100	80	125		297	809	254	254	160	420	160	120			400	340		18	15	140	129	269								
EAZS80/40-18504	Y2-180M-4	18.5	310																	839			279	241	180	455	142	157	299				
EAZS80/40-22004	Y2-180L-4	22						879	279	142	179	321																					
EAZS80/40-30004	Y2-200L-4	30	280					355	249	322	909	318	305							200			505	19	148	240	387						
EAZS100/40-22004	Y2-180L-4	22																						15	160	179	339						
EAZS100/40-30004	Y2-200L-4	30	284					358	964	356	286	225	560							19			162	240	401								
EAZS100/40-37004	Y2-225S-4	37																					168	301	469								
EAZS100/40-45004	Y2-225M-4	45	125					100	140	280	355	284	358			989	356			311			225	200	150	500	400	23	19	168	312	480	
EAZS125/40-30004	Y2-200L-4	30	170					240																						410			
EAZS125/40-37004	Y2-225S-4	37	284					358		964	356	286	311			225	560			176			301			476							
EAZS125/40-45004	Y2-225M-4	45		176	312	488																											
EAZS125/40-55004	Y2-250M-4	55	377	1054	406	349	250	615		180	383	562																					
EAZS125/40-75004	Y2-280S-4	75											181	544	725																		
EAZS150/40-37004	Y2-225S-4	37	200	150	160		358	966		356	286	225	560	200	150	550	450	19	200	301	501												
EAZS150/40-45004	Y2-225M-4	45																	200	312	512												
EAZS150/40-55004	Y2-250M-4	55					203	383		586																							
EAZS150/40-75004	Y2-280S-4	75		205	544	748																											
EAZS150/40-90004	Y2-280M-4	90																															